



KINGDOM ELECTRONICS CC

Electronic Design and Manufacture  
Security & Access Control Equipment

PO Box 1940 • HONEYDEW • 2040  
Tel: (011) 791 1362/3749 • Fax: (011) 791 6610

CK 1991 /002586 / 23 VAT Reg No. 4130137047

E-mail: ke-sa@mweb.co.za Website: www.kesa.co.za

## **TECHNICAL PRODUCT BULLETIN**

### **Home Guard remote jamming detector**

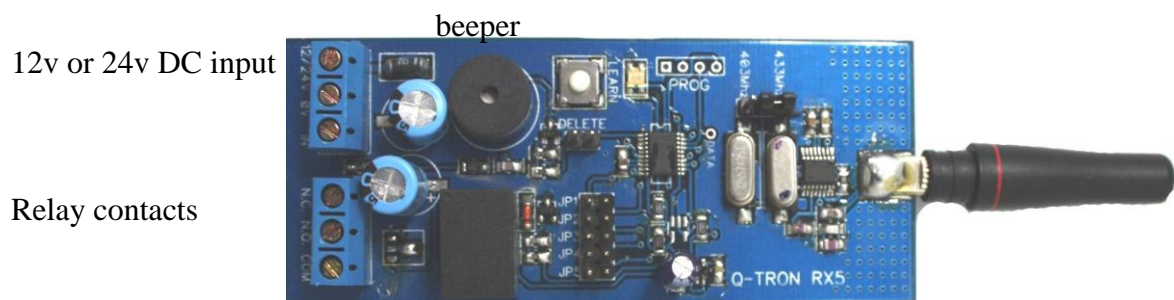
#### **Application**

- ▶ Alert user of potential jamming of home alarm.

#### **Specifications**

- ▶ 12v DC operation.
- ▶ 433Mhz frequency detection.
- ▶ Beeper and relay outputs.
- ▶ Adjustable timing before jamming trigger.
- ▶ Physical size: 100mm x 50mm.

#### **Wiring Diagram**



#### **Installation**

- ▶ Connect 12v DC to receiver.
- ▶ Connect relay contacts to 24hr zone on alarm panel, or siren.
- ▶ Press and hold any remote on 433mhz, unit begins to beep and goes into alarm if jamming continues.

QT07-003-B